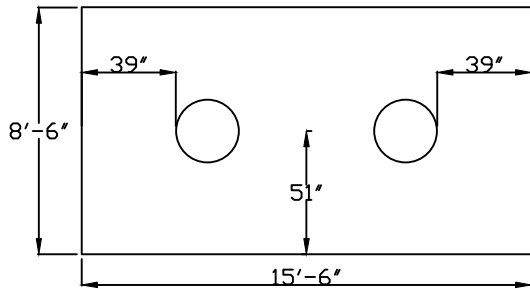


# 5000 GAL GREASE INTERCEPTOR

## REBAR PLACEMENT

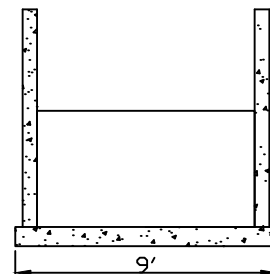
- #4 @ 12" C/C EA. WAY WALLS
- #5 @ 6" C/C EA. WAY TOP SLAB
- #5 @ 12" C/C EA. WAY BOT SLAB



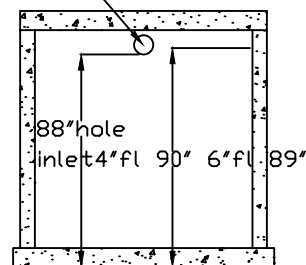
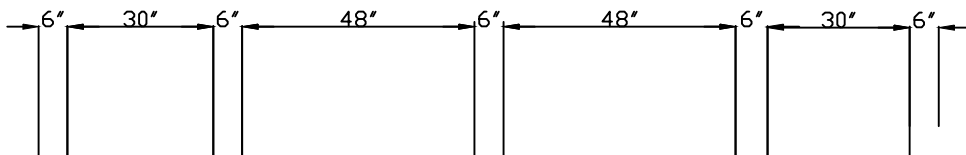
PLAN-TOP SLAB

WT. OF TOP SLAB 12880#  
 WT. OF STRUCTURE 44640#  
 TOTAL WEIGHT 57520#

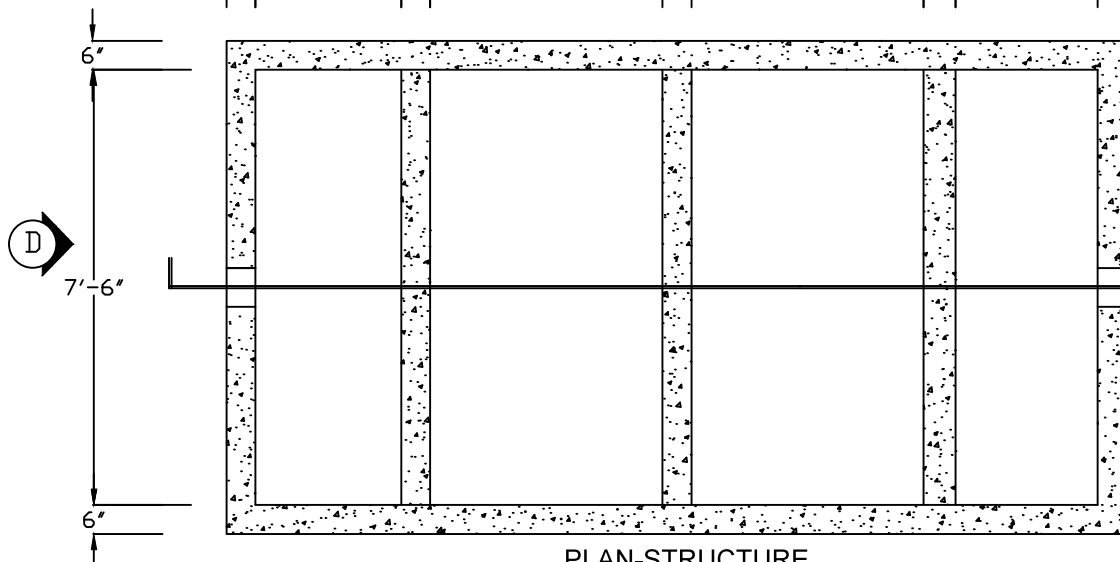
DIG SIZE 17' X 10' X 9'-7" MIN.



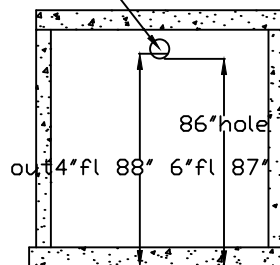
ELEVATION 8" INLET HOLE (B)



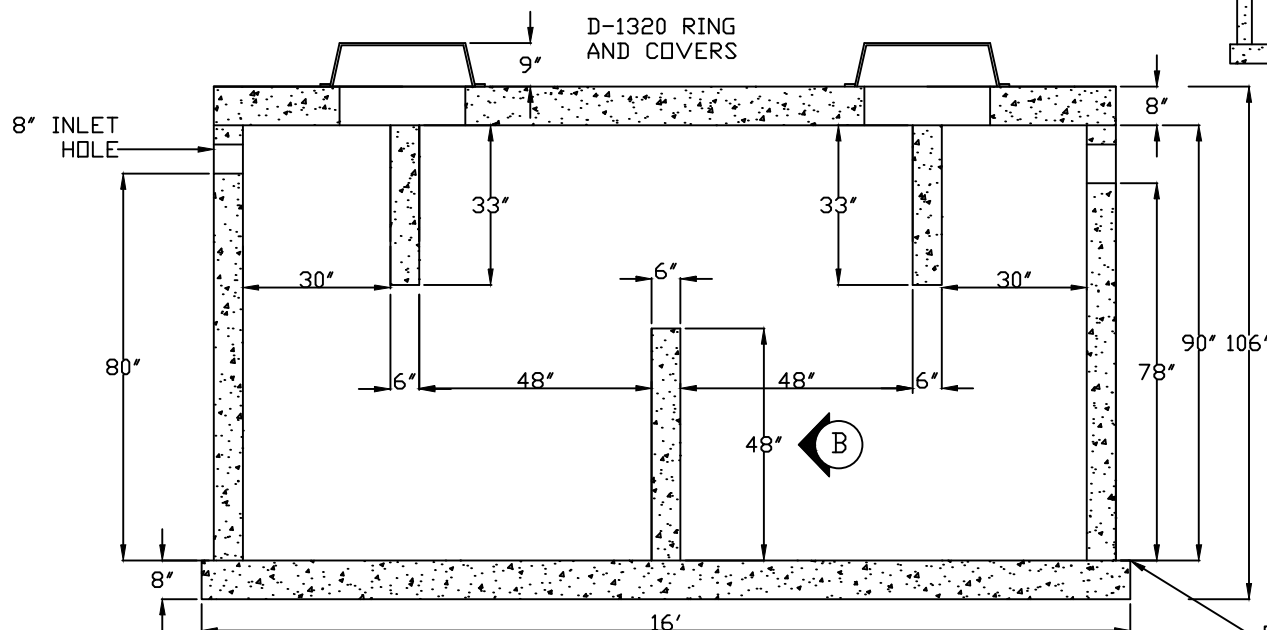
ELEVATION 8" OUTLET HOLE (D)



PLAN-STRUCTURE



ELEVATION (C)



SECTION (A)

EXTEND BASE 3" ALL SIDES

TOTAL HEIGHT (MIN) 98"+8"+9" R&C=115"